

platform[®]

www.misaplaform.com

SOLID | DURABLE | HIGH QUALITY | LONG LASTING

NEW GENERATION OF POLYMER FORMWORK



 MISA



www.misaplaform.com

SOLID | DURABLE | HIGH QUALITY | LONG LASTING

NEW GENERATION OF POLYMER FORMWORK



Online Catalogue



LOCAL PRODUCTION

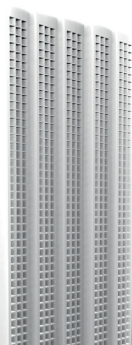


A new technology brought to you by MISA

SOLID | DURABLE | HIGH QUALITY | LONG LASTING

What are the Key Features?

 <p>1 Standard Plaform is 1250mm x 2500mm x 18mm (3.125m²). It is available in 12mm - 15mm - 18mm - 21mm thickness.</p>	 <p>Plaform is reusable and long lasting. In fact, it has a much longer life-span than that of its counterparts even in the most difficult construction sites.</p>	 <p>When using Plaform no oil coating is needed as our product does not adhere to the concrete. Therefore saving you money.</p>
 <p>With the ability to withstand falls from high heights, Plaform guarantees reliability, resistance and resilience.</p>	 <p>Owing to its lightweight, it is easier to carry compared to its counterparts thus saving time at the site and making the assembly and disassembly process effortless.</p>	 <p>Like its counterpart, plywood, our product can be cut, nailed, drilled or hammered with ease.</p>
 <p>It exhibits resilience against various climatic conditions, remaining unaffected by extreme temperatures. Moreover, it effortlessly withstands water, moisture, and humidity without any concern.</p>	 <p>Our product does not get deformed by scratches or blows. Therefore, the smooth concrete finish achieved in the initial use persists throughout multiple applications.</p>	 <p>Plaform can be easily cleaned using water.</p>
 <p>Plaform is 100% recyclable, contributing to sustainability in construction practices.</p>	 <p>It can be stacked or stored in any environment.</p>	 <p>It can be used in different parts of construction such as the columns, sheer walls, floors, stairs, corners and beams. It is also suitable for circular sheer wall building since it is flexible and can regain its form after being bent or stretched.</p>





Frequently Asked Questions

Is it long-lasting and where else can we use it?

Plaform's exceptional strength, durability, and impressive impact resistance make it exceptionally long-lasting. In comparison to its counterparts, it boasts a significantly extended lifespan. Moreover, its high efficiency in construction formwork systems, along with its adaptability to various other sectors, underscores its versatility and effectiveness across a wide range of applications.

Do we need to use an oil coating?

No bond breaker, such as oil, is necessary when using Plaform since it doesn't adhere to the concrete like its counterparts, thereby saving you both time and money.

Does it create a smooth surface?

As mentioned above, no oil is needed when using our product because it doesn't stick to the concrete. Thus, we obtain a clean and smooth surface even after long use.

Can we cut or nail it?

Yes, our product can be easily cut using a circular saw or jigsaw, similar to the process employed with wooden and film-coated plywood boards. Additionally, it is well-suited for screwing, with nails effortlessly driven in and removed without any risk of breakage or cracking. Notably, its exceptional nail holding capacity further enhances its suitability for various applications.

Is it affected by weather conditions?

Our product remains unaffected by extreme temperatures, including high heat, and is distributed in numerous countries renowned for their warm climates, such as Nigeria, Iraq, Jordan, and the UAE. Additionally, its 100% polymer structure ensures resistance to water, moisture, and humidity.

Is it fire resistant?

Our product is not fire resistant but unlike its counterparts such as timber and plywood, Plaform does not contribute to the spread of a fire. Instead at about 163°C our product begins to melt in its place.

Can we paint it?

Yes, our product can be painted with a spray paint or any other paint. No specific product is required.

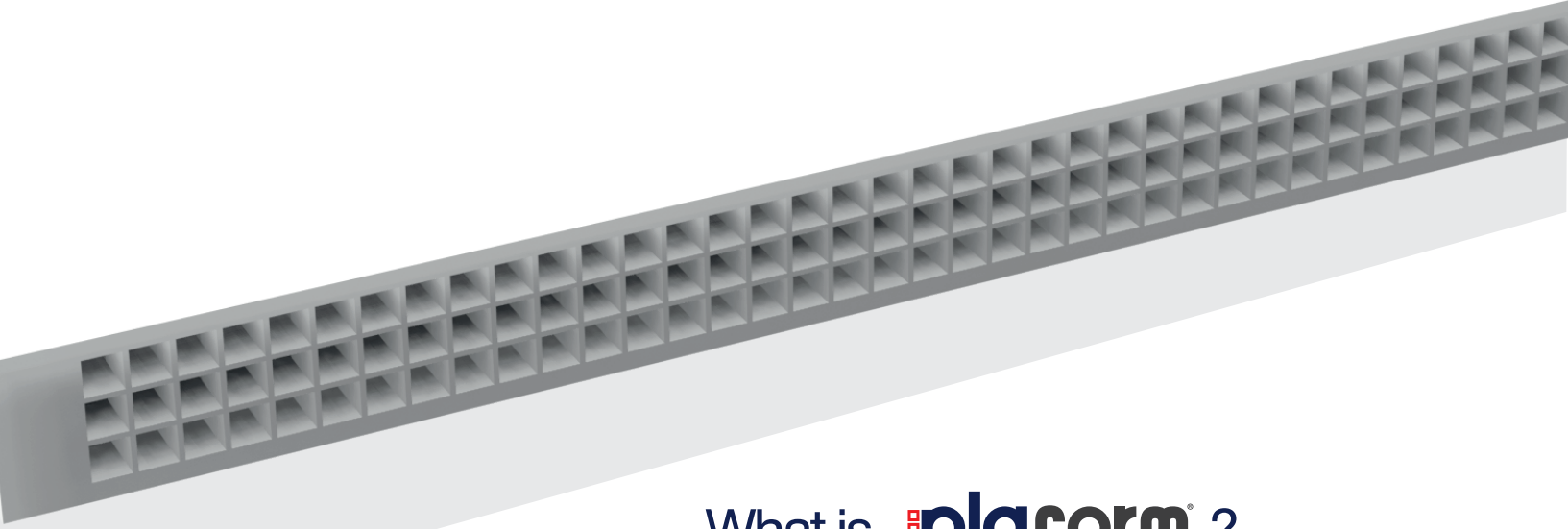
Can it be recycled?

The 100% Polymer product is completely recyclable, even the smallest pieces are not wasted. Cashback on weight basis reduces the unit price of the product by up to 20%. Thus significantly reducing formwork material cost.



 **plaform**®

 **plaform**®

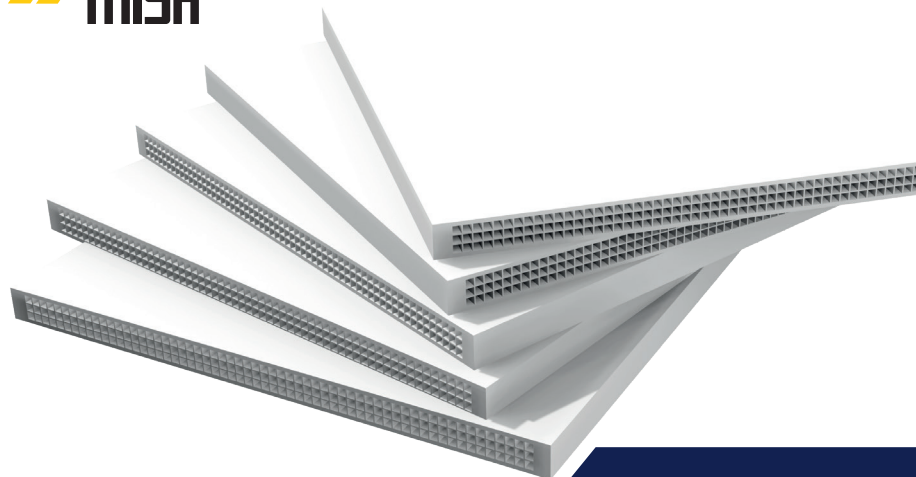


What is **plaform**® ?

Plaform represents a cutting-edge advancement in shuttering formwork technology, harnessing the power of PP Polymer as its base material. In contrast to its traditional counterparts such as timber, plywood, and steel formworks, our product stands out with its advantages. Notably, with the incorporation of nano-technology and nano-polymer additives within its specialized blend, our product boasts a significantly reduced deformation rate, limited to just 2mm, a remarkable improvement over its conventional counterparts.



 **MISA**®



plaform®



Usage Areas ?

Plaform finds versatile applications across multiple sectors, with a primary focus on the construction industry. Within this sector, it serves as a reliable solution for forming columns, corners, floors, stairs, sheer walls, and beams. Specifically engineered for optimal performance, Plaform is particularly recommended for use in flooring applications with a static concrete thickness of up to 30cm, with recommended intervals between 30-35cm. For detailed guidelines on interval recommendations for sheer walls, please refer to the user manual.

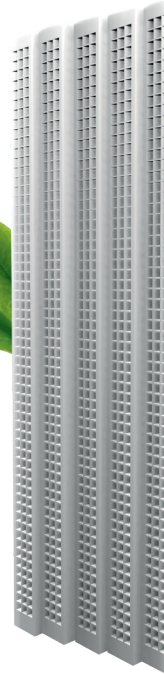


IN TRANSPORT AND SHIP SECTOR

It is used in the floor and side covers of the truck trailers, the floors of the containers, the floor and side parts of the wagons, animal transport vehicles, buses and cargo parts of the ships.

OTHER AREA OF USAGE

Plaform's versatility extends beyond the construction sector to encompass a wide array of applications. From traffic signs and billboards to urban furniture and garden sheds, its utility knows no bounds. Plaform also finds its place in recreational facilities such as basketball backboards, skate courts, and wall climbing boards, as well as in stage and show constructions. Additionally, it serves as an ideal material for countertops, textile machine tables, and cutting benches. Its adaptability even extends to the production of toys, game halls, musical instruments, and musical columns. With such diverse capabilities, Plaform opens up endless possibilities, including but not limited to crafting animal houses and more.



- Reduce your product cost and time with easier assembly and disassembly. (10.25kg per m² for 18mm , 9.4kg per m² for 15mm and 13.76kg per m² for 21mm)

Horizontal Use

Multi-Span Thick Surface

Deflection and Strength Tables in Line of Strong Axis

		Döşeme Beton Kalınlığı (cm)				Slab Concrete Thickness (cm)						
		10	12	15	18	20	25	30	35	40		
		Servis Yüğü (kN/m²)					Service Load (kN/m²)					
		4.104	4.604	5.354	6.104	6.604	7.854	9.104	10.604	12.104		
		Tasarım Yüğü (kN/m²)					Design Load (kN/m²)					
		6.1404	6.8904	8.0154	9.1404	9.8904	11.7654	13.6404	15.5154	17.3904		
		EI= 1.287 kNm²					T=15°C					
		Sehim (mm)						Deflection (mm)			Limit	
Mesbet Aralığı (cm)	Girder Spacing (cm)	15	0.011	0.012	0.015	0.017	0.018	0.021	0.025	0.029	0.033	2.111
		20	0.035	0.039	0.046	0.052	0.057	0.067	0.078	0.091	0.104	2.222
		25	0.086	0.096	0.112	0.128	0.138	0.164	0.191	0.222	0.253	2.333
		30	0.178	0.200	0.232	0.265	0.287	0.341	0.395	0.460	0.525	2.444
		35	0.330	0.370	0.430	0.491	0.531	0.631	0.372	0.852	0.973	2.556
		40	0.563	0.631	0.734	0.837	0.906	1.077	1.248	1.454	1.660	2.667
		45	0.902	1.011	1.176	1.341	1.451	1.725	2.000	2.329	2.659	2.778
		50	1.374	1.541	1.793	2.044	2.211	2.630	3.048	3.550	4.052	2.889
		55	2.012	2.257	2.624	2.992	3.237	3.850	4.463	5.198	5.933	3.000
	60	2.849	3.196	3.317	4.238	4.585	5.453	6.320	7.362	8.403	3.111	
	65	3.924	4.403	5.120	5.837	6.315	7.510	8.706	10.140	11.574	3.222	
	70	5.279	5.922	6.886	7.851	8.494	10.102	11.709	13.639	15.568	3.333	
	75	6.956	7.804	9.075	10.346	11.193	13.312	15.431	17.973	20.516	3.444	

Vertical Use

Multi Span Thick Surface

Deflection and Strength Tables in Line of Strong Axis

		Concrete Casting Speed (m/h)						
		2	3	4	5	6	7	
		Maks. Concrete Pressure (kN/m²)			Consistency: K2			
		39.0	49.0	59.0	69.0	79.0	89.0	
		EI= 1.287 kNm²			T=15°C			
		Deflection (mm)						Limit
Length Range (cm)	20	0.334	0.420	0.506	0.591	0.677	0.763	3.222
	25	0.816	1.025	1.235	1.444	1.653	1.862	3.333
	30	1.692	2.126	2.560	2.994	3.428	3.862	3.444
	35	3.135	3.939	4.743	5.547	6.351	7.154	3.556
	40	5.348	6.720	8.091	9.462	10.834	12.205	3.667
		Maks. Concrete Pressure (kN/m²)			Consistency : K3			
		46.0	60.0	74.0	88.0	102.0	116.0	
Length Range (cm)	20	0.394	0.514	0.634	0.754	0.874	0.994	3.222
	25	0.963	1.256	1.548	1.841	2.134	2.427	3.333
	30	1.996	2.603	3.211	3.818	4.426	5.033	3.444
	35	3.698	4.823	5.949	7.074	8.199	9.325	3.556
	40	6.308	8.228	10.148	12.068	13.988	15.908	3.667

Attachment-A: Horizontal Use

Single Span Platform Sheet Surface Deflection and Strength Tables Along the Strong Axis

		Döşeme Beton Kalınlığı (cm)					Slab Concrete Thickness (cm)				
		10	12	15	18	20	25	30	35	40	
		Servis Yüğü (kN/m ² /m)					Service Load (kN/m ² /m)				
		4.104	4.604	5.354	6.104	6.604	7.854	9.104	10.604	12.104	
		Tasarım Yüğü (kN/m ² /m)					Design Load (kN/m ² /m)				
		6.1404	6.8904	8.0154	9.1404	9.8904	11.7654	13.6404	15.5154	17.3904	
		EI= 1.287 kNm ²					T= 15°C				
		Sehim (mm)					Deflection (mm)				
											Limit
Girder Spacing (cm)	15	0.021	0.024	0.027	0.031	0.034	0.040	0.047	0.054	0.062	2.111
	20	0.066	0.075	0.087	0.099	0.107	0.127	0.147	0.172	0.196	2.222
	25	0.162	0.182	0.212	0.241	0.261	0.310	0.360	0.419	0.478	2.333
	30	0.336	0.377	0.439	0.500	0.541	0.643	0.746	0.869	0.992	2.444
	35	0.623	0.699	0.813	0.926	1.002	1.192	1.382	1.609	1.837	2.556
Mesnet Aralığı (cm)	40	1.063	1.192	1.386	1.580	1.710	2.034	2.357	2.746	3.134	2.667
	45	1.702	1.909	2.220	2.532	2.739	3.257	3.776	4.398	5.020	2.778
	50	2.584	2.910	3.384	3.858	4.175	4.965	5.755	6.703	7.651	2.889
	55	3.798	4.261	4.955	5.649	6.112	7.269	8.426	9.814	11.202	3.000
	60	5.379	6.035	7.018	8.001	8.656	10.295	11.933	13.899	15.866	3.111
	65	7.409	8.312	9.666	11.020	11.923	14.180	16.436	19.144	21.853	3.222
	70	9.966	11.180	13.001	14.823	16.037	19.072	22.108	25.750	29.393	3.333
	75	13.133	14.733	17.133	19.534	21.134	25.134	29.134	33.934	38.734	3.444
		Gerilme (Mpa)					Stress (MPa)				
											Limit
Girder Spacing (cm)	15	0.320	0.359	0.417	0.476	0.515	0.613	0.710	0.808	0.906	19.18
	20	0.569	0.638	0.742	0.846	0.916	1.089	1.263	1.437	1.610	
	25	0.888	0.997	1.160	1.322	1.431	1.702	1.973	2.245	2.516	
	30	1.279	1.436	1.670	1.904	2.061	2.451	2.842	3.232	3.623	
	35	1.741	1.954	2.273	2.592	2.805	3.336	3.868	4.400	4.931	
Mesnet Aralığı (cm)	40	2.274	2.552	2.969	3.385	3.663	4.358	5.052	5.746	6.441	
	45	2.878	3.230	3.757	4.285	4.636	5.515	6.394	7.273	8.152	
	50	3.553	3.988	4.639	5.290	5.724	6.809	7.894	8.979	10.064	
	55	4.300	4.825	5.613	6.400	6.926	8.239	9.551	10.864	12.177	
	60	5.117	5.742	6.680	7.617	8.242	9.805	11.367	12.930	14.492	
	65	6.005	6.739	7.839	8.939	9.673	11.507	13.340	15.174	17.008	
	70	6.965	7.816	9.092	10.368	11.218	13.345	15.472	17.598	19.725	
	75	7.995	8.972	10.437	11.902	12.878	15.320	17.761	20.202	22.644	

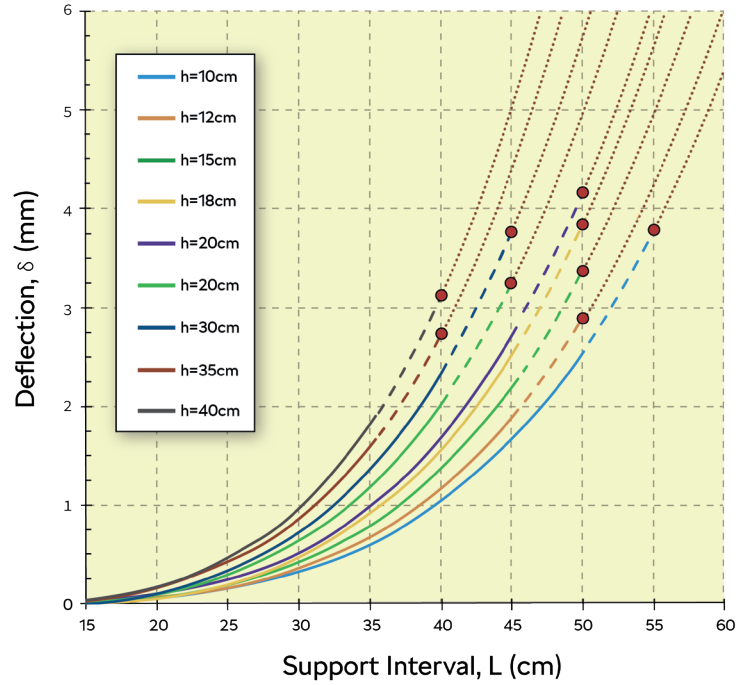


Figure A. Deflection curves for the strong direction of PLAFORM in a single span application

Attachment-C: Horizontal Use

Single Span Platform Sheet Surface Deflection and Strength Tables Along the Strong Axis

		Döşeme Beton Kalınlığı (cm)					Slab Concrete Thickness (cm)				
		10	12	15	18	20	25	30	35	40	
		Servis Yüğü (kN/m ² /m)					Service Load (kN/m ² /m)				
		4.104	4.604	5.354	6.104	6.604	7.854	9.104	10.604	12.104	
		Tasarım Yüğü (kN/m ² /m)					Design Load (kN/m ² /m)				
		6.1404	6.8904	8.0154	9.1404	9.8904	11.7654	13.6404	15.5154	17.3904	
		EI= 1.287 kNm ²					T= 15°C				
		Sehim (mm)					Deflection (mm)				
											Limit
Girder Spacing (cm)	15	0.011	0.012	0.015	0.017	0.018	0.021	0.025	0.029	0.033	2.111
	20	0.035	0.039	0.046	0.052	0.057	0.067	0.078	0.091	0.104	2.222
	25	0.086	0.096	0.112	0.128	0.138	0.164	0.191	0.222	0.253	2.333
	30	0.178	0.200	0.232	0.265	0.287	0.341	0.395	0.460	0.525	2.444
	35	0.330	0.370	0.430	0.491	0.531	0.631	0.732	0.853	0.973	2.556
Mesnet Aralığı (cm)	40	0.563	0.631	0.734	0.837	0.906	1.077	1.248	1.454	1.660	2.667
	45	0.902	1.011	1.176	1.341	1.451	1.725	2.000	2.329	2.659	2.778
	50	1.374	1.541	1.793	2.044	2.211	2.630	3.048	3.550	4.052	2.889
	55	2.012	2.257	2.624	2.993	3.327	3.385	4.463	5.198	5.933	3.000
	60	2.849	3.196	3.717	4.238	4.585	5.453	6.320	7.362	8.403	3.111
	65	3.924	4.403	5.120	5.837	6.315	7.510	8.706	10.140	11.574	3.222
	70	5.279	5.922	6.886	7.851	8.494	10.102	11.709	13.639	15.568	3.333
	75	6.956	7.804	9.075	10.346	11.193	13.312	15.431	17.973	20.516	3.444
		Gerilme (Mpa)					Stress (MPa)				
											Limit
Girder Spacing (cm)	15	0.256	0.287	0.334	0.381	0.412	0.490	0.568	0.646	0.725	19.18
	20	0.455	0.510	0.594	0.677	0.733	0.872	1.010	1.149	1.288	
	25	0.711	0.798	0.928	1.058	1.145	1.362	1.579	1.796	2.013	
	30	1.023	1.148	1.336	1.523	1.648	1.961	2.273	2.586	2.898	
	35	1.393	1.563	1.818	2.074	2.244	2.669	3.094	3.520	3.945	
Mesnet Aralığı (cm)	40	1.819	2.042	2.375	2.708	2.930	3.486	4.042	4.497	5.153	
	45	2.303	2.584	3.006	3.428	3.709	4.412	5.115	5.818	6.521	
	50	2.842	3.190	3.711	4.232	4.579	5.447	6.315	7.183	8.051	
	55	3.440	3.860	4.490	5.120	5.540	6.591	7.641	8.691	9.594	
	60	4.094	4.594	5.344	6.094	6.594	7.844	9.094	10.344	11.594	
	65	4.804	5.391	6.271	7.152	7.738	9.205	10.672	12.139	13.606	
	70	5.572	6.252	7.273	8.294	8.975	10.676	12.377	14.079	15.780	
	75	6.396	7.178	8.349	9.521	10.303	12.256	14.209	16.162	18.115	

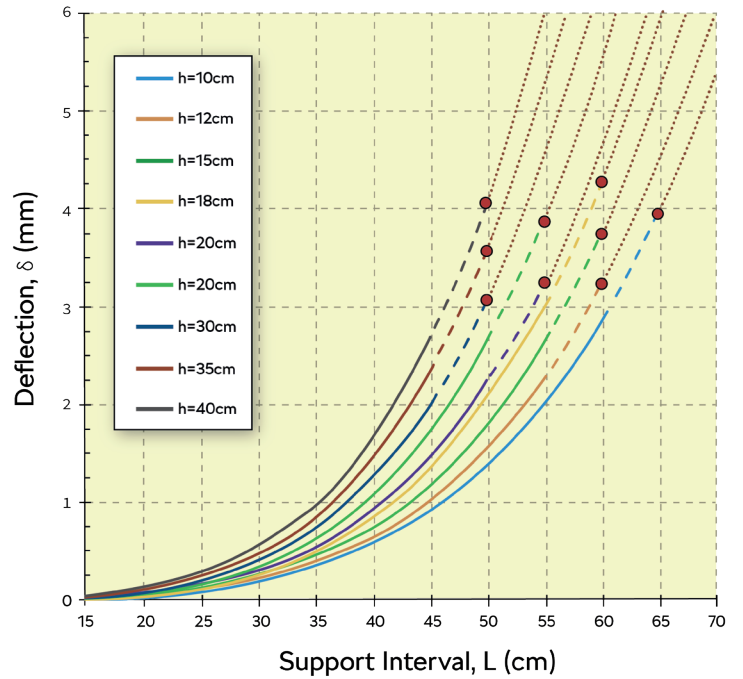
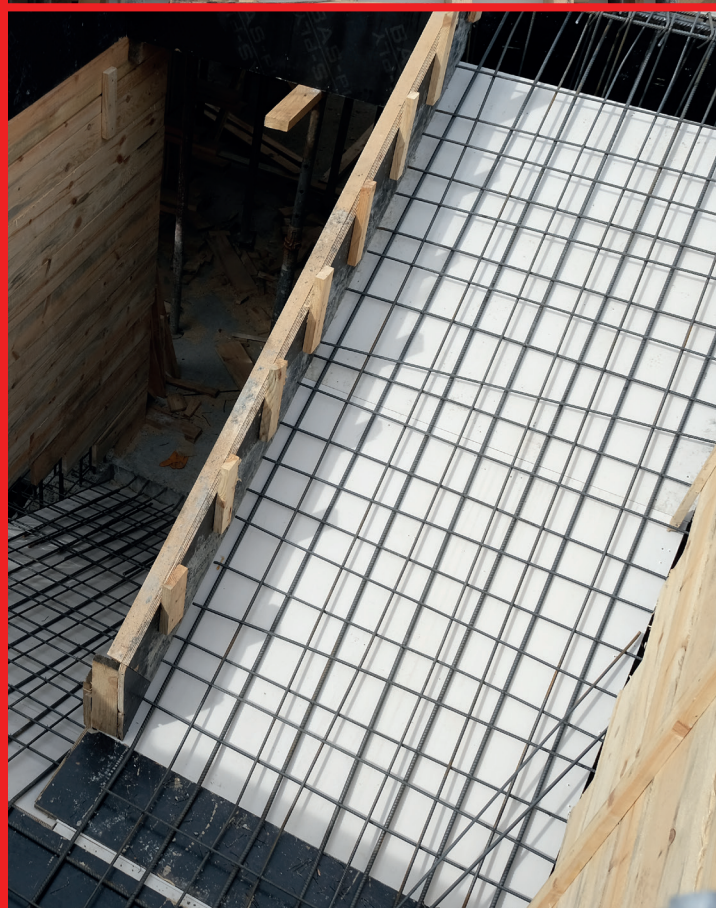


Figure C. Deflection curves for the strong direction of PLAFORM in a single span application



Certificates

TRB INTERNATIONAL

SERTİFİKA

MİSA KALIP PAZARLAMA SANAYİ VE TİCARET LİMİTED ŞİRKETİ

FATSA OSB MAH. 110 SK. NO: 10 FATSA/ORDU

ISO 14001:2015

BETONARME İÇİN PLASTİK KALIP, LEVHA ÜRETİMİ VE SATIŞI

Belge bu sertifika sahibinin yukarıda belirtilen alanda faaliyet gösterdiği konuları ve gerekliliklerine uygun olarak TRB Belgelendirme Kuruluşu tarafından değerlendirilip ve belgenin ilgili alanda aktif olarak yerine getirilmesini sağladığına ilişkin olarak verilmiştir. Ayrıca bu sertifika, kuruluşun TRB Belgelendirme Kuruluşuna bağlı olarak faaliyet gösterdiğini ve "www.trb.com.tr" adresinde yer alan belgeleri kontrol edilebilir.

Sertifika No : DE-EC-2285
Ticari Tarih : 30.01.2022
Geçerlilik Tarihi : 30.01.2023
Sertifika Dönemi : 3 Yıl / 3 Yıl
Baskı No : 100

Gözetim Müdürü

IAF DAKKS

Haraparat 07.04.2022 Kuruluşun Belgelendirme Kuruluşu
Ticari Tarih : 30.01.2022 Tarih : 30.01.2023 Tarih : 30.01.2023 Tarih : 30.01.2023

bel cert

TECHNICAL FILE INSPECTION CERTIFICATE

TEKNİK DOSYA İNCELEME BELGESİ

MİSA KALIP PAZARLAMA SANAYİ VE TİCARET LİMİTED ŞİRKETİ

FATSA OSB MAH. 110 SK. NO: 10 FATSA/ORDU /TÜRKİYE

The following described product in its delivered version complies with appropriate basic safety and health requirements of BUILDING MATERIALS REGULATION 2001/95 / EU on its design and type, as brought into circulation by us. In Case of alteration of the product, not agreed upon by us, this declaration will lose its validity.

Taahhüt edilen ürünümüzün teslimat versiyonunda uygun temel güvenlik ve sağlık şartlarına uygun olduğunu beyan ederiz. Ürünün değiştirilmesi durumunda, tarafımızdan onaylanmayan bir beyan geçerliliğini kaybedecektir.

Description Of The Product/Product Part : CONSTRUCTION FORMWORK/ PLATFORM
Endüstri / Ürün Parçası / Bölüm : İNŞAAT KALIBI PLATFORM
Brand/Marka : MİSA KALIP
Applicable EC Directive : 2001/95/EC
Uygulanabilir Direktifler : 2001/95/EC
Applicable Harmonized Standards : TS EN 16719
Uygulanabilir Standartlar : TS EN 16719
Certificate Code : MİSA KALIP
Sertifika Kodu : MİSA KALIP
Certificate Number : A1542574
Sertifika Numarası : A1542574
Certificate Issue Date : 13.10.2023
Sertifika Başlatma Tarihi : 13.10.2023
Certificate Validity Date : 13.10.2024
Sertifika Geçerlilik Tarihi : 13.10.2024
EU Representative/AB Temsilcisi : (Authorized Signature and Title)
(Yetkili İmza ve Unvan)

Şirketin etkin ve sürdürülebilir faaliyetleri için belgenin geçerliliğini sağlar. Ürünün değiştirilmesi durumunda, tarafımızdan onaylanmayan bir beyan geçerliliğini kaybedecektir.

100% QUALITY

CE

ASTOR MAYER

ATTESTATION OF CONFORMITY

Manufacturer: **MİSA KALIP PAZARLAMA SANAYİ VE TİCARET LİMİTED ŞİRKETİ**

Address: Fatma OSB Mahallesi 110 Koy Sokakı No:10 Fatma-ORDU/TÜRKİYE

Product: **PLASTİK KALIP LEVHASI**

Model/Type: **18MM, 21 MM**

Brand Name: **Misa - Platform**

Related Standard: **TSE K 12 Plastic sheet for formwork of reinforced concrete**

Test Report: --

The above mentioned Technical File presented by manufacturer complies with requirements referred to Directive, 2001/95/EC, Council product safety Directive, CE Marking Directive in add i C.C. marking & add 2 (Declaration of Conformity) applying to it.

The certificate is issued for the purposes of:
- drawing up EC declaration of conformity
- affixing to the product the CE marking.

This certificate with the referred technical file is reviewed and attested with presumption of compliance with the essential requirements listed EU Directive(s) above. Other relative directive must be applied. This attestation does not absolve the manufacturer's obligation of the manufacturer to issue the declaration of conformity. This certificate does not remove the responsibility in national / international trade of the company's for product safety, labeling etc. This certificate is written on subject to conditions. Any significant change to the design and structure of the product will invalidate this certificate. The responsibility for the product and the non-test materials in accordance with the regulation is the responsibility of the manufacturer or his authorized representative. This certificate is prepared by examining the technical file and test results of the customer.

Certificate No : FC-22.01.201
Certificate Date : 28.01.2022
Issue Date : 28.01.2022
Validity Period : 6 years (01/2022 - 01/2028)
Expiry Date : 27.01.2028

Onay/Approve

The document is valid as long as the Client complies with the terms of the contract, maintains product surveillance and maintains the relevant requirements of the standard.

ASTOR MAYER LABORATUVAR VE BELGELENDİRME VE İZLENİMLERİ A.Ş.

Atatürk Mah. Çarşıbaşı Cad. No:78 Kartal / İstanbul / TÜRKİYE

020 490 74000 Yayımla 020 490 74000 Yayımla 020 490 74000 Yayımla 020 490 74000 Yayımla

bel cert

CERTIFICATE

Uluslararası Belgelendirme

MİSA KALIP PAZARLAMA SANAYİ VE TİCARET LİMİTED ŞİRKETİ

FATSA OSB MAH. 110 SK. NO: 10 FATSA/ORDU /TÜRKİYE

Kuruluşumuz "BASKA YERDE SINIFLANDIRILMAMIS PLASTİK İNŞAAT MALZEMELERİNİN (MALAT) (PLASTİK SUNI TAŞ - MERMERİT İMALATI)" Kapasite için

For scope "MANUFACTURING OF PLASTIC CONSTRUCTION MATERIALS NOT ELSE CLASSIFIED (PLASTIC ARTIFICIAL STONE-MARBLE MANUFACTURING)"

KALİTE YÖNETİM SİSTEMİ

QUALITY MANAGEMENT SYSTEM

Kuruluşumuz ve ilgili faaliyetleri belgenin ve BEL tarafından gerçekleştirilen denetimler ile yönetimin istenilen seviyesinde uygulanmasını garanti altına almıştır.

It certifies that it is established and implemented, and the audit performed by BEL, it confirms that this management system meets the requirements of the following standard:

ISO 9001:2015

Sertifika Numarası / Certificate Number : A1542574
Sertifika Kodu / Certificate Code : MİSA KALIP
Sertifika Yayımla Tarihi / Certificate Issue Date : 13.10.2023
Sertifika Geçerlilik Tarihi / Certificate Validity Date : 13.10.2024
Sertifika Periyodu / Certificate Period : 3 Yıl / 3 Yıl

002873

BEL CERT ULUSLARARASI BELGELENDİRME ŞİRKETİ
Hürriyet Bulvarı, No:45, Taksim/Beşiktaş, İstanbul
Ticari Tarih : 30.01.2022 Tarih : 30.01.2023 Tarih : 30.01.2023 Tarih : 30.01.2023

bel cert

CERTIFICATE

Uluslararası Belgelendirme

MİSA KALIP PAZARLAMA SANAYİ VE TİCARET LİMİTED ŞİRKETİ

FATSA OSB MAH. 110 SK. NO: 10 FATSA/ORDU /TÜRKİYE

"Müşteri Memnuniyeti ve Şikâyetleri Yönetim Sistemi"

"Customer Satisfaction and Complaints Management System"

(ISO 10002:2018)

Kuruluşumuz ve ilgili faaliyetleri belgenin ve BEL tarafından gerçekleştirilen denetimler ile yönetimin istenilen seviyesinde uygulanmasını garanti altına almıştır.

It certifies that it is established and implemented, and the audit performed by BEL, it confirms that this management system meets the requirements of the following standard:

Sertifika Numarası / Certificate Number : A1542574
Sertifika Kodu / Certificate Code : MİSA KALIP
Sertifika Yayımla Tarihi / Certificate Issue Date : 13.10.2023
Sertifika Geçerlilik Tarihi / Certificate Validity Date : 13.10.2024
Sertifika Periyodu / Certificate Period : 3 Yıl / 3 Yıl

002874

BEL CERT ULUSLARARASI BELGELENDİRME ŞİRKETİ
Hürriyet Bulvarı, No:45, Taksim/Beşiktaş, İstanbul
Ticari Tarih : 30.01.2022 Tarih : 30.01.2023 Tarih : 30.01.2023 Tarih : 30.01.2023

bel cert

CERTIFICATE

Uluslararası Belgelendirme

MİSA KALIP PAZARLAMA SANAYİ VE TİCARET LİMİTED ŞİRKETİ

FATSA OSB MAH. 110 SK. NO: 10 FATSA/ORDU /TÜRKİYE

Kuruluşumuz "BASKA YERDE SINIFLANDIRILMAMIS PLASTİK İNŞAAT MALZEMELERİNİN (MALAT) (PLASTİK SUNI TAŞ - MERMERİT İMALATI)" Kapasite için

For scope "MANUFACTURING OF PLASTIC CONSTRUCTION MATERIALS NOT ELSE CLASSIFIED (PLASTIC ARTIFICIAL STONE-MARBLE MANUFACTURING)"

Çevre Yönetim Sistemi

Environmental Management System

Kuruluşumuz ve ilgili faaliyetleri belgenin ve BEL tarafından gerçekleştirilen denetimler ile yönetimin istenilen seviyesinde uygulanmasını garanti altına almıştır.

It certifies that it is established and implemented, and the audit performed by BEL, it confirms that this management system meets the requirements of the following standard:

ISO 14001:2015

Sertifika Numarası / Certificate Number : A1542574
Sertifika Kodu / Certificate Code : MİSA KALIP
Sertifika Yayımla Tarihi / Certificate Issue Date : 13.10.2023
Sertifika Geçerlilik Tarihi / Certificate Validity Date : 13.10.2024
Sertifika Periyodu / Certificate Period : 3 Yıl / 3 Yıl

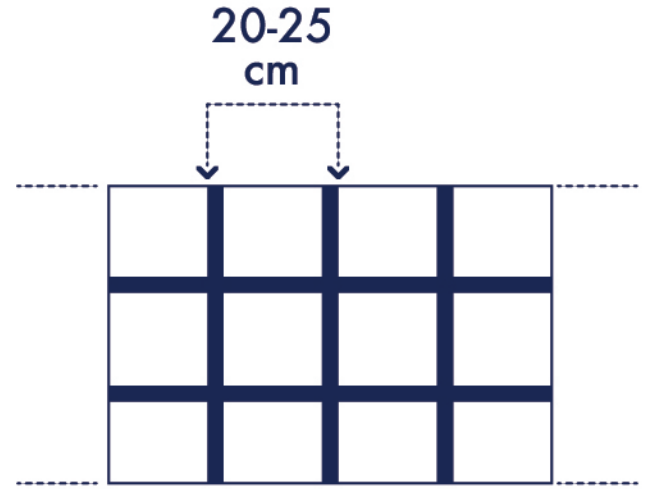
002871

BEL CERT ULUSLARARASI BELGELENDİRME ŞİRKETİ
Hürriyet Bulvarı, No:45, Taksim/Beşiktaş, İstanbul
Ticari Tarih : 30.01.2022 Tarih : 30.01.2023 Tarih : 30.01.2023 Tarih : 30.01.2023

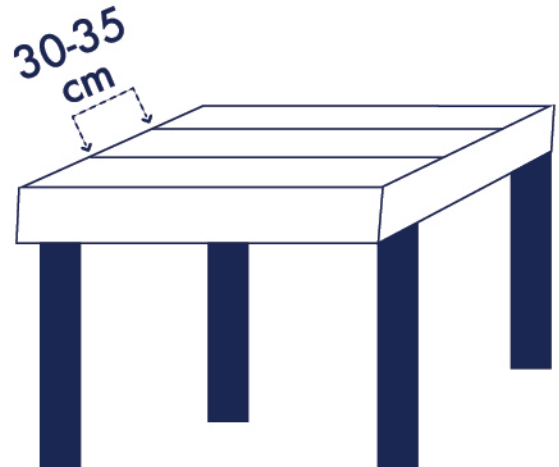
USER MANUAL

1- If the support in the shear wall construction is in the vertical direction, plate grooves should be horizontal. If plate grooves are used vertically, supports should be placed horizontally.

2- Support intervals in shear wall construction should not exceed 20-25 cm.



3- Support intervals in flooring construction should not exceed the range of 30-35 cm.



4- The product should be cleaned with water after each disassembly.

www.misaplaform.com

 **plaform®**



Online Catalogue



Technical Report



Fabrika
OSB Mahallesi 110. Köy Sok. No:10
Fatsa Organize Sanayi
Fatsa,Ordu-TÜRKİYE



+90 452 888 MISA
6472



/misaplaform



info@misaplaform.com